



Features

- Dynamic Load Balancing, Tap, Link Aggregation, Stream Regeneration, Matrix Switching, and smart filtering in a single device
- Deep Packet Inspection (DPI) with pattern matching in the L4-L7 payload
- Three 10-Gigabit XFP ports and 34 1-Gigabit ports
- In-line and SPAN network modules
- 10 SFP monitor port interfaces
- Daisy-chain with Director devices up to 10 chassis (Director Pro can occupy end positions only)
- TapFlow™ multi-layer filtering engine
- Multiple filter elements per chassis
- RMON statistics (packet count, utilization, etc.)
- Indigo™ management software

Benefits

- Leverages existing monitoring tool investments
- Improves network visibility and security threat management
- Zero packet loss
- Relieves oversubscribed tools by filtering
- Compatible with monitoring tools and intrusion detection and prevention systems from all major manufacturers

while streamlining the amount of data the tools need to process.

Efficient Monitoring Access

Volumes of multi-protocol network traffic continue to skyrocket, with increased security threats, tighter regulatory compliance requirements, and upgrades to 10 Gigabit links further complicating network operations. Maintaining network security, guaranteeing quality of service, and tracking billing information accurately in this environment means monitoring every critical network link for more detailed information and different types of data. As a result, monitoring tools are oversubscribed and multiple groups with various responsibilities compete for use of the tools and access points. Director Pro answers the need for more efficient monitoring access by enabling a pool of tools to be deployed across a large number of network links, with remote, centralized control of exactly which traffic is directed to each tool. TapFlow™ filtering technology lets you select traffic of interest for each tool based on protocols, IP addresses, ports, VLANs, and MPLS labels. Dynamic load balancing spreads the load from 10 G and aggregated 1G traffic evenly over multiple tools, while retaining the

integrity of flows. DPI provides a powerful capability to look deep inside packets at L4-L7 information by matching ASCII and hex-based patterns anywhere within the packet payloads.

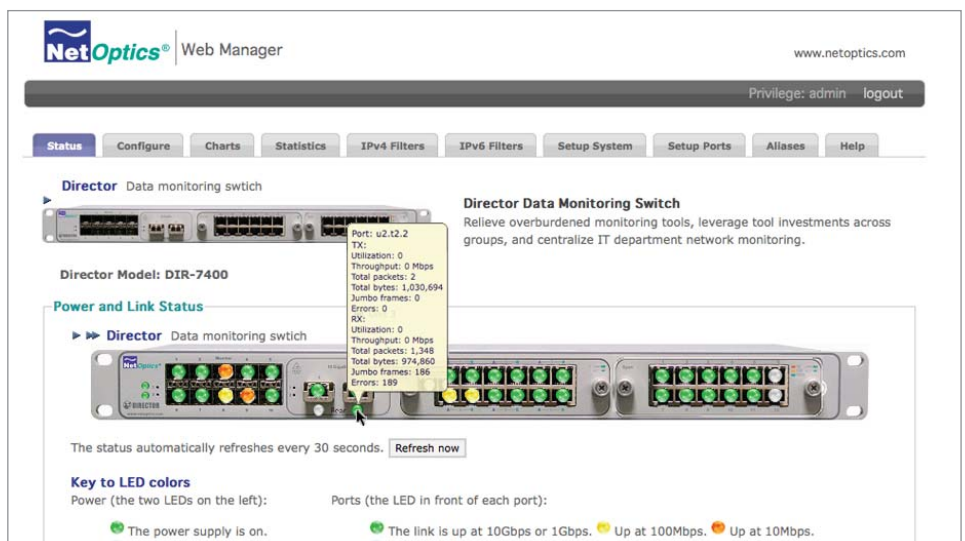
By centralizing monitoring through Director Pro, tools can be moved instantly from one link to another without unplugging cables and physically moving devices. There is no need to wait for a maintenance window or get approvals for changing the network configuration because Director Pro is completely transparent to the network. Even if power is removed from both of the unit's redundant, hot-swappable power supplies, the fully passive design ensures that in-line network links remain open and network traffic keeps flowing.



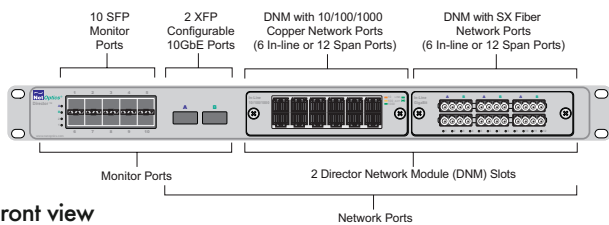
Indigo™ Management Software

Director Pro has a rich, easy-to-use GUI management tool called Web Manager, which can be accessed from any Web browser. With Web Manager's intuitive interface, you don't need to be an expert to monitor link status, graph RMON statistics, set up filters, or configure Director Pro.

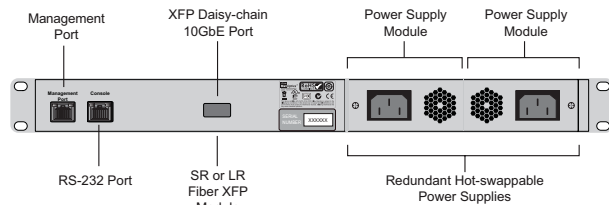
Net Optics Director Pro takes monitoring access to a whole new level by adding dynamic load balancing, deep packet inspection (DPI), and centralized traffic statistics collection into the monitoring access layer of the network infrastructure. In addition, Director Pro carries forward the Director family's capabilities of aggregation, regeneration, switching, and L2-L4 filtering, as well as offering the highest port density in the industry: 24 Span ports or 12 in-line links with 10 monitoring tool ports and three 10 Gigabit ports. Director Pro provides the access capabilities you need to leverage your monitoring tools across your entire network



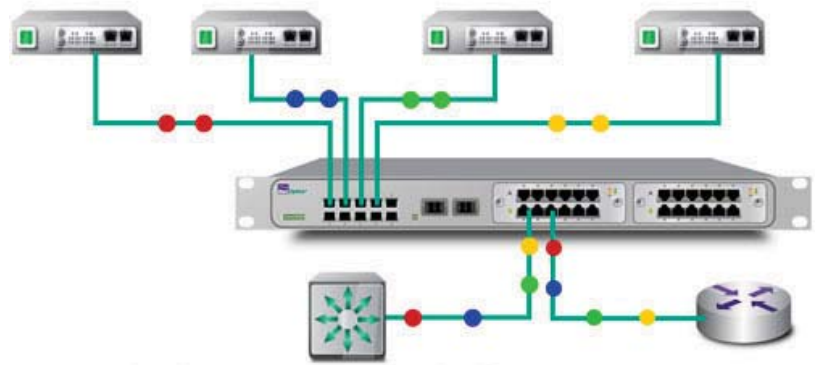
Web Manager



Front view



Rear view



Dynamic Load Balancing

Specifications, chassis

Operating

Operating Temperature: 0°C to 40°C
 Storage Temperature: -10°C to 70°C
 Relative Humidity: 10% min, 95% max, non-condensing

Mechanical

Dimensions: 1.75" high x 25" deep x 19" wide
 Mounting: Surface or 19" rack mount (1U)
 Weight:
 DIR-6400P (26lbs)
 DIR-3400P (24lbs)
 DNM (1.5lbs)

Connectors

Network Port Slots: (2) Director Network Module (DNM)
 Monitor Ports: (10) SFP
 Configurable 10Gigabit Ports: (2) XFP
 Daisy-chain (uplink) 10Gigabit Ports: (1) XFP
 Management Port: (1) RJ45 10/100 Copper Network
 Configuration (CLI) Port: (1) RS-232 DB9
 Power: (2) AC universal

Electrical Specifications

Power: 100-240VAC, 2A, 47-63Hz (Japan: 100-125VAC, ~120 VA, 50-60Hz)
 DC Input: -48VDC nominal, -36 to -72VDC, 6.0A
 DC Receptacle: Terminal peak, 12-14 gauge wire
 Maintenance: Power supplies are hot-swappable

Indicators

(All ports) Link LEDs (with speed indication on Copper ports),
 (All ports) Activity LEDs
 (1) Alarm LED
 (2) Power LEDs

Certifications

Fully RoHS compliant

Performance

Hardware throughput: 64Gbps and 34Gbps
 Dynamic load balancing: 10Gbps aggregated throughput, 1 to 32 outputs, overflow mode, failover spare, four balance modes: flow (IP address pair), flow (IP source address), flow (IP destination address), packet-by-packet round-robin
 TapFlow: More than 1,000 filter elements per chassis; filter by IP source address, IP destination address, MAC source address, MAC destination address, source port, destination port, protocol, network port or port group, VLAN, utilization threshold, Ethertype, outer MPLS label; accurate ranges
 DPI: Pattern matching in complete packet payload L4-L7; up to three patterns matched sequentially; 64 byte pattern length; ASCII, hex, bitwise don't cares; optional case sensitivity, anchored or unanchored search, independent offsets for each pattern and filter
 RMON statistics: Current utilization, peak utilization, peak time, total packets, total bytes, CRC errors, collision packets, oversize packets, undersize packets
 Alarms: Programmable utilization threshold alarm for each network and monitor port

Indigo™ Management Software

Net Optics Web Manager — compatible with all major Web browsers
 Net Optics System Manager — compatible with Windows XP, Windows 2000, and Windows 98
 SNMPv3, SNMPv2, SNMPv1 support

Part Numbers

DIR-6400P: Director Pro, Main Chassis, 2 DNM Bays, 10 SFP Ports, 3 XFP Ports
 DIR-3400P: Director Pro, Main Chassis, 2 DNM Bays, 10 SFP Ports
 DIR-6400P-DC: Director Pro, Main Chassis, 2 DNM Bays, 10 SFP Ports, 3 XFP Ports, -48V
 DIR-3400P-DC: Director Pro, Main Chassis, 2 DNM Bays, 10 SFP Ports, -48V

Specifications, DNM

Copper Interfaces

(12) RJ45 Network Ports 10/100/1000Mbps
 (6) In-line or (12) SPAN depending on model
 22-24 AWG unshielded twisted pair cable, CAT5e or better recommended

Fiber Optic Interfaces

(12) Gigabit SX Network Ports, LC type
 (6) In-line or (12) SPAN depending on model
 Fiber Type: Corning Multimode 50 or 62.5/125µm, 850 nm
 Transceiver: GigaBit SX 850nm, VCSEL, supports 62.5/125µm
 Transceiver: GigaBit LX 1310nm or 1550nm, VCSEL, supports 8.5/125µm
 Safety: Class 1, eye-safe, laser emitter type; conforms to the applicable requirements per US 21 CFR (J) and EN 60825-1; also UL 1950 applications

Part Numbers

10/100/1000 Copper In-Line Module: DNM-100
 10/100/1000 Copper Span Module: DNM-110
 GigaBit SX Fiber In-Line Module: DNM-200
 GigaBit 50µm SX Fiber In-Line Module: DNM-220
 GigaBit SX Fiber Span Module: DNM-210
 GigaBit 50µm SX Fiber Span Module: DNM-230
 GigaBit 1310nm LX Fiber In-Line Module: DNM-300
 GigaBit 1550nm ZX Fiber In-Line Module: DNM-320
 GigaBit 1310nm LX Fiber Span Module: DNM-310
 GigaBit 1550nm ZX Fiber Span Module: DNM-330

Distributed by:

BRAIN FORCE
 smart IT for your business

BRAIN FORCE Software GmbH
 Ohmstr. 12
 63225 Langen
 Germany

T: +49 6103 906 767
 netoptics@brainforce.com
 www.network-taps.eu



5303 Betsy Ross Drive • Santa Clara, CA 95054
 +1 (408) 737-7777 • www.netoptics.com

Net Optics® is a trademark of Net Optics, Inc.
 Copyright 2010 Net Optics, Inc. All rights reserved.