



GigaBit TX to SX Tap

Net Optics GigaBit TX to SX Tap simplifies connecting FX fiber monitoring and security devices to GigaBit copper network links. Convert TX to SX and tap into the link with one device, reducing cost and complexity at the same time. GigaBit TX to SX Taps support passive monitoring of GigaBit links at speeds at 1000 Mbps.

GigaBit TX to SX Taps establish permanent passive access ports without introducing a point of failure or disturbing other network connections. Without an IP address, monitoring devices are isolated from the network, dramatically reducing their exposure to attacks. However, the monitoring device connected to the Tap still sees all full-duplex traffic as if it were in-line, including Layer 1 and Layer 2 errors.

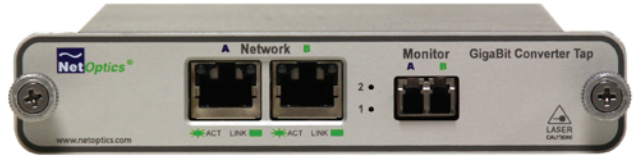
Full-duplex monitoring is a snap with supplied cables. All network and monitoring cables necessary for plug-and-play deployment are included. For extra monitoring uptime, Net Optics GigaBit TX to SX Taps offer redundant power connections.

Passive, Secure Technology

- Provides passive access at speeds at 1000 Mbps without data stream interference or introducing a point of failure
- Access GigaBit copper links with SX fiber devices without a separate converter
- Permanent in-line installation without affecting network performance
- Passes all full-duplex traffic (including errors) from all layers for comprehensive troubleshooting
- No IP address is needed for the Tap or monitoring device, enhancing monitoring security
- Redundant power ensures monitoring uptime

Ease of Use

- LED indicators show redundant power and link status
- Front-mounted connectors make installation and operation quick and easy
- Three cables included for plug-and-play deployment
- Silk-screened application diagram illustrates all connections for easy deployment
- Optional 19-inch rack frames hold up to 3 or 12 Taps
- Tested and compatible with all major manufacturers' monitoring devices, including protocol analyzers, probes, and intrusion detection/prevention systems



Technical Specifications:

Operating:

Operating Temperature: 0°C to 55°C

Storage Temperature: -10°C to 70°C

Relative Humidity: 10% min, 95% max, non-condensing

Mechanical:

Power Supply:

Input: 100-240VAC, 0.5A, 47-63Hz, Output: 12V, 1.5A

Dimensions: 1.125" high x 6.5" deep x 4.5" wide

Fiber Optic Interface:

Connector: Class 1, eye-safe, laser emitter type. These Class 1 Lasers conform to the applicable requirements per US 21 CFR (J) and EN 60825-1, also UL 1950 applications.

Optical Transmitter Wave Length: 850nm nominal

Output Power: -9.5dBm min, -4dBm max

Optical Receiver Input Sensitivity: 0 dB min, -17 dB max

Fiber:

Wavelength: 850nm

Fiber Type: Corning Multimode 62.5/125µm

Insertion Loss: Monitor Port: 4.5 dB

Cable Interface:

Copper Cable Type:

22-24 AWG unshielded twisted pair cable, CAT5/CAT5E

Link Distance Supported: 100 meters

Connectors:

Monitoring Ports: (1) Multimode Duplex LC connector

Network Ports: (2) RJ45, 8 pin connectors

Certifications:

Fully RoHS compliant

Part Number	Description
CVT-GCU/SX	GigaBit TX to SX Converter Tap, LC-Type
RK-12V2	Twelve Slot Rack Mount Frame
RK-3V2	Three Slot Rack Mount Frame

All products include a 1 year manufacturer's warranty. An additional 1 or 2 year extended warranty may also be purchased.